

MANUAL

CARABINERS

CA- Circle, OVAL-NL/SL/TR, D-TR, EASY, MGO
CS- OVAL-SL-TR, D-TR, SNAP, MGO



NOTIFIED BODY FOR EU TYPE EXAMINATION AND PRODUCTION CONTROL:

Apave Exploitation France SAS (0082) 6 Rue du General Audran - 92412 COURBEVOIE cedex - France.

Snap hook is a component of the personal protective equipment against falls from a height. Snap hook must conform to EN 362 -Personal protective equipment against falls from a height - connectors. Snap hook is the openable device used to connect components of fall arrest equipment into complete fall arrest system.

USAGE

Before each use, a close visual examination of the snap hook components (body, gate, locking gear) must be carried out in respect of mechanical, chemical and thermal defects. The examination must be done by a person who is going to use the snap hook. In the case of any defect or doubt of correct condition of the snap hook do not use the snap hook.

Using the snap hook, in connection with fall arrest system, must be compatible with manual instructions of the fall arrest systems and obligatory standards:

- EN361 - for the safety harness;
- EN353-1, EN353-2, EN355, EN354, EN360 - For the fall arrest systems;
- EN341 - for the rescue equipment;
- EN358 - for the work positioning equipment.

The snap hooks with manual locking (e. g. screw locking) shall be acceptable only in cases where the user does not have to attach and remove the snap hook many times a working day.

During use the snap hook must be protected from a contact with acids, solvents, basics, open fire, hot metal drops and sharp edges. If you have any doubts about the conditions where the snap hook will be used, ask the manufacturer.

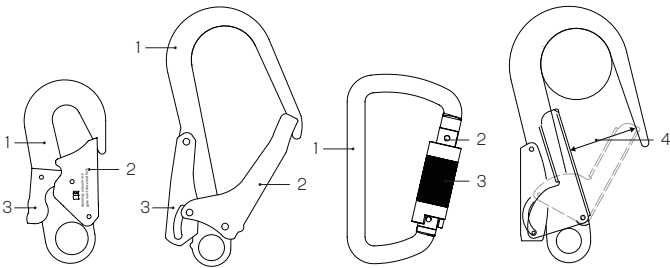
Necessarily protect the snap hook gate with locking gear

The length of the snap hook should be taken into account when used in any fall arrest system as it will influence the length of a fall.

The shape of the structural anchor point should not let self-acting disconnection of the snaphook.

It must be taken into consideration that some situations during use may reduce the strength of the snap hook, e. g. connecting to wide straps.

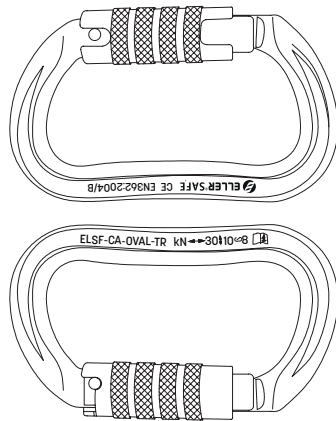
NOMENCLATURE OF PARTS



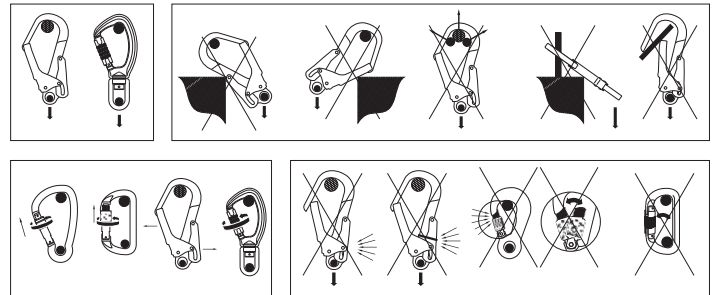
1. Body
2. Gate
3. Gate locking gear
4. Gate opening-maximum gap for

the passage of an element into the snap hook and which allows the correct functioning of the gate locking feature.

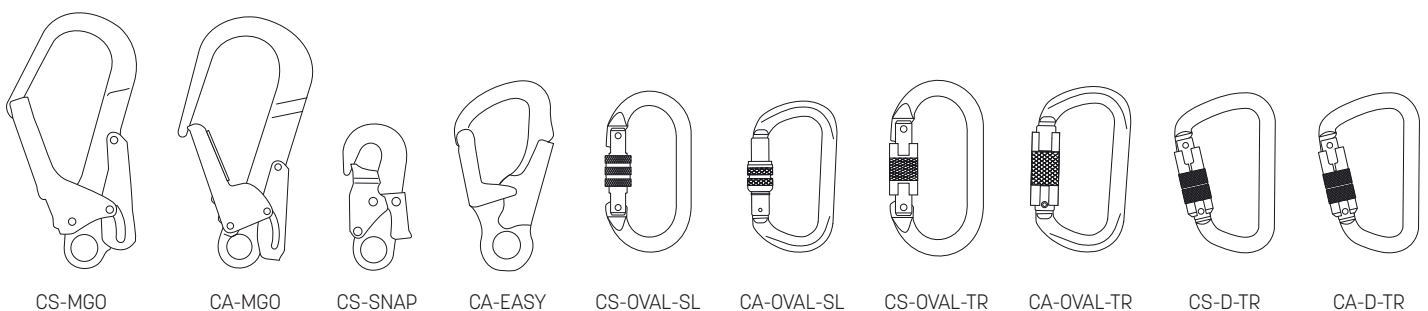
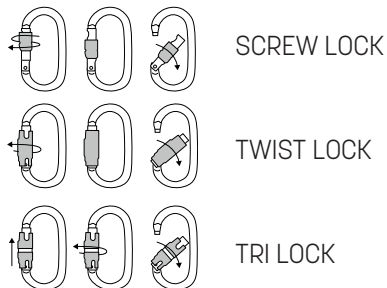
MARKING



- \longleftrightarrow Means the major axis
- gate closed and locked
- 23kN loading rate
- ELLERsafe brand name
- HT-R03 means model
- number;XX/YY: batch number
- XX express month
- YY express year
- CE conform according to Regulation 2016/425
- 0082 means notified body
- EN362:2004: European standard and public year Class means level of connector
- "Always read and follow the warnings and instructions for use"



OPENING THE GATE:



CS-MGO

CA-MGO

CS-SNAP

CA-EASY

CS-OVAL-SL

CA-OVAL-SL

CS-OVAL-TR

CA-OVAL-TR

CS-D-TR

CA-D-TR

